



# THE GATEWAY EAGLE

**Society of Government Meeting Professionals  
P.O. Box 78233, St. Louis MO 63178-8233**

Volume 9, Issue 5 May 2008

<b>Inside This Issue—</b>	
<b>Spotlight On/ Apr 23, 2008 Meeting Photos</b>	<b>2</b>
<b>Meet New Member/Community Service</b>	<b>3</b>
<b>Membership Notes/Dallas 2008 Ed Conference</b>	<b>4</b>
<b>Calendar of Events</b>	<b>5</b>
<b>Ads &gt;&gt;&gt;&gt;&gt;&gt;</b>	<b>5</b>
<b>St. Louis Chapter Board Members 2007-2009</b>	<b>6</b>

## **President's Corner By Jeanette Turnbaugh**



Greetings fellow SGMP members! Only one more month until the National Conference in Dallas! If you haven't registered yet, I hope you will still consider attending. The educational and networking opportunities are priceless. There are certification opportunities, educational workshops, an exceptional SGMP Exhibition, and keynote speakers such as Olympian Gold Medalist, Dominique Dawes. I would like to congratulate our scholarship recipients, Linda Lefebvre, Joy Dufraim and Tim North!

We are still accepting donations for the Community Project, **Heroes for Children**. This is a nonprofit organization that provides financial and social assistance to families, within the state of Texas, with children ages 0 – 22 who are battling cancer. We will present a check from the St. Louis Gateway Chapter at the Chapter President's Meeting in Dallas.

I look forward to seeing you at the May meeting at the Drury Plaza Hotel Downtown, May 28<sup>th</sup>!

## **Monthly Educational Meeting Opportunity**

**Saving Costs and Clients with  
Catering**

**Presented by  
Mandi Boehringer  
Partner – JBuck's Restaurant**

**WHEN:** Wednesday May 28, 2008  
**11:00 a.m.** Registration and Networking  
**11:30 a.m.** Business Meeting and Lunch

**12:15 p.m.** Program

**WHERE:** Drury Plaza Hotel Downtown  
**2 South 4th Street**  
**St Louis, Missouri, 63102**  
**P: 314-231-3003**  
**Parking Garage entrance is on  
Market Street side**

**RSVP by calling Nancy Pittman at –  
636-922-8314, or e-mail  
[npittman@stchas.edu](mailto:npittman@stchas.edu)**

**All RSVPs need to be received no later than  
Noon Friday, May 23, 2008.**

## **Mission Statement**

The Society of Government Meeting Professionals, Inc. (SGMP) is a national organization dedicated to improving the knowledge and expertise of individuals in the planning and management of government meetings through education and industry relationships.

*Spotlight On*  
**Drury Plaza  
 Hotel Downtown  
 St. Louis**



Historic elegance is built into every feature of the Drury Plaza Hotel, blending memories of the past with the present. Three historic buildings house the beautifully restored Drury Plaza Hotel at 4th & Market in downtown St. Louis. Step outside for a breathtaking view of the landmark Gateway Arch, a must-see stop in St. Louis, then take the 630-foot ride to the top to look out over the city and Mississippi River. Have we mentioned the many FREE destinations St. Louis has to offer? Less than 6 miles from the hotel, you'll find the St. Louis Zoo, St. Louis Art Museum, St. Louis History Museum, St. Louis Science Center and Forest Park, all free of charge. You'll also enjoy many FREE extras during your stay at the Drury Plaza Hotel. Start your day in St. Louis with free HOT! **QUIKSTART**® Breakfast, including scrambled eggs, biscuits and gravy, sausage and more every morning! Make sure to join us for free evening beverages and snacks, served daily from 5:30-7:00 pm in the lobby. While away from home, let Drury Hotels help you stay connected with one hour of free long distance every night. You can also catch up on emails with free wireless Internet in all rooms and the lobby. After a busy day, drift off to sleep on the comfortably plush bed in your beautifully appointed room. We look forward to your visit to the Drury Plaza Hotel!

The Drury Plaza Hotel also offers 12,000 square feet of [meeting and banquet space](#) to accommodate your next event! With a total of 11 meeting rooms, our staff is dedicated to creating a flawless experience.

\*On-site, covered parking is offered at the hotel for a daily fee.

**Number of Floors: 10 · Number of Rooms: 355**

**April 23, 2008**, Hyatt Regency St. Louis Union Station. Photos submitted by Tim North.



Below is Gayle French/NGA who presented an interesting presentation on "VIP Protocol and Etiquette." Thanks Gayle for sharing your knowledge with us and special thanks for the handouts.



## Meet our New Planner Member Linda Adams



I decided to join SGMP because of the wonderful networking opportunities I believe it has to offer. In just the first two meetings I have learned a lot and also feel that I have a lot of knowledge that I can share with other SGMP members. I feel the chapter could enhance my career by simply attending meetings and sharing ideas with other planners.

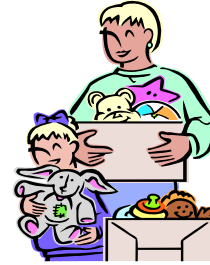
My current position is a Waste Specialist II. I provide technical assistance to businesses, individuals, and non-profits on solid waste reduction and recycling issues. I have coordinated several conferences with "greening issues" and have recycled at the conferences as well.

I am also a board member for the Missouri Recycling Association. I was born and raised in the St. Louis Area where I have lived with the exception of two and a half years in Anchorage, Alaska. I love to travel and spend time with friends and family.

Linda Adams  
Waste Specialist II  
St. Louis-Jefferson Solid Waste Mgmt. District  
7525 Sussex Avenue  
St. Louis, MO 63143  
[www.swmd.net](http://www.swmd.net)

## Community Service

By Tim North



**Please remember to bring personal toiletries, clothing, toys and school supplies for our Community Service Project. Thank You!**

Thanks' again SGMP Members for all you do. Your efforts bring smiles to many faces.

Tim North  
Community Service Chair

**Congratulations to Ms. Lagina Fitzpatrick. You are still welcome to attend our chapter meetings whenever you are in the area.**

**SGMP Announces new National Second Vice President**

Please welcome Mrs. Maria Herring as the new National Second Vice President of the SGMP Board of Directors. Ms. Herring is a member of the Old Dominion Chapter and the National Capital Chapter. As the 2007 Sam Gilmer Supplier of the Year recipient, she will no doubt bring the professionalism and qualifications to serve as a leader on the National Board. Ms. Herring will be SWORN IN at the Annual Education Conference on Thursday, June 12, 2008.

**Ms. Lagina Fitzpatrick, former Second Vice President, resigned her position on April 7, 2008. Ms. Fitzpatrick is now the Director of Sales of a brand new resort property that recently opened in Lake of the Ozarks, MO. We'll miss her leadership and dedicated support to SGMP.**

**Our best wishes are with Lagina as she wears her new hat.**

## MEMBERSHIP NOTES

**By Karen Fraser**  
2<sup>nd</sup> Vice President  
Membership Chairperson



The St. Louis Gateway Chapter has 27 members. Linda Adams with the St. Louis-Jefferson SWMD has just joined us. Thank you to Tim North with St. Louis Audio Visual, Inc. Also, thanks to Shermane Wolford-Winters for rejoining our chapter. Welcome back Shermane!

We have some great Educational programs coming up that you won't want to miss. We are always working on recruiting new members, so if you know of anyone that is interested, please let me know. Better yet, bring them as your guest to the next meeting. If you are a supplier, to join, you must have a planner join with you. If you are a planner to join, you do not need to bring on a supplier with you.

By joining the St. Louis Gateway Chapter, you will be able to attend our monthly meetings to network, meet new people, attend our educational program and enjoy a great lunch. As an SGMP member, you are able to access the SGMP National website and links to all chapters for planner resources, conference facilities, educational conferences, newsletters and more. You will also receive the Government Meetings Advantage Magazine published quarterly. Let's all work together and get involved in recruiting members. See you at the May 28<sup>th</sup> Meeting!

Karen Fraser  
2<sup>nd</sup> Vice President  
Membership Chairperson  
Greater Saint Charles Convention & Visitors Bureau  
230 South Main Street  
Saint Charles, MO 63301  
636-255-6102 or [kfraser@historicstcharles.com](mailto:kfraser@historicstcharles.com)

**Members attending this year's Educational Conference, please do not forget to attend our own Tim North's Presentation at the Conference on "The Technology of AV from Past to Present".**

2:00 pm – 3:30 Pm Tuesday June 12th

The host hotel this year is the Hilton Anatole Dallas.

**Sunday June 8-11, 2008:** Pre-Conference Education and Training Courses

**Wednesday June 11, 2008:** Welcome Reception 6:30-9:30

**Thursday June 12, 2008:** 8:30-5:30 Educational Workshops

**Friday June 13, 2008:** 8:30-12:00 Educational Workshops

12:00-2:00 Gilmer Awards Luncheon

2:00-4:00 Exhibit/Tradeshow

6:30pm Farewell Fiesta

**Saturday June 14, 2008:** 11:00am First Annual Gilmer Open Golf Tournament

**Join us for the First Annual Gilmer Open Golf Tournament**

Saturday, June 14, 2008

11:00am Shotgun Start

4:00pm Post Tournament Awards Reception

**Best Wishes to all members who have studied and are enrolled to take their CMP or CHSC Test to get their certification. You can do it!**

## Calendar of Events

Mark Your Calendar Now To Attend



**May 28, 2008**

Drury Plaza Hotel Downtown  
"Saving Costs and Clients with Catering"

**June 25, 2008**

Crowne Plaza St. Louis Downtown  
"Awards Luncheon"

**July 23, 2008**

TBA  
"Make Your Work and Home Green"

### St. Louis Missouri Local Attractions and Events

**Missouri Botanical Garden** – "Niki Exhibit"  
Now through October 31, 2008. A must see  
This is the first Niki de Saint Phalle exhibition in  
St. Louis. Children are encouraged to touch, sit  
on, and climb many of the works.

[www.mobot.org](http://www.mobot.org)

The MUNY Tickets are now on sale for the  
following shows:

The Producers	June 16-22
Disney's High School Musical	June 23-29
My Fair Lady	July 7-13
90 Years of Muny Magic	July 14-20
Miss Saigon	July 21-27
My One and Only	July 28- Aug 3
Fiddler on The Roof	Aug 4-10

[www.muny.org](http://www.muny.org)

The Missouri History Museum

Lee and Grant Exhibition May 17-Sep 7  
Please check out their web site

[www.mohistory.org](http://www.mohistory.org)

The St. Louis Zoo - Free Admission – Always a Favorite

Enjoy the seasons, savor every moment.  
Be Happy!

**"Always There is a Way."**

## Audio Visual Equipment Rental & Sales

- Data/Video Projectors
  - 32", 40", 50" LCD/Plasma Displays
  - Slide Projectors, Overheads, Screens
  - DVD, Cam-Corders, Monitors
  - P.A./Sound Systems
  - Audio-Video Duplications
- Prompt, Reliable Service  
Sales and Installation  
24 Hour Emergency Service
- St. Louis  
Audio  
Visual
- 314-783-0070**  
8236 Brentwood Industrial  
[www.stlouisav.com](http://www.stlouisav.com)

**The Corporate Meeting Specialists**

Member of IREB, ILA/IFA, ICSMP

**ST. LOUIS AUDIO VISUAL, INC.**

Hilton  St. Louis Frontenac



## LOCATION!

OVER 25,000 SQUARE FEET OF FLEXIBLE MEETING SPACE.

..... LOCATION! .....

MEETING PLANNER PACKAGES

..... LOCATION! .....

EXCEPTIONAL FOOD QUALITY

..... LOCATION! .....

CUSTOMIZED MEETINGS AND SPECIAL EVENTS

..... LOCATION! .....

AMPLE FREE PARKING

A FRONTENAC TRADITION IN MEETING AND BANQUET EXCELLENCE

Conveniently located in the Center of St. Louis  
at Lindbergh Blvd. & Hwy. 64/40.  
1335 S. Lindbergh Blvd. • St. Louis, MO 63131  
314-993-1100 • Fax 314-993-8085  
[www.stlouisfrontenachilton.com](http://www.stlouisfrontenachilton.com)

[www.stlouisfrontenachilton.com](http://www.stlouisfrontenachilton.com) 314-993-1100

### Greater Saint Charles Convention & Visitors Bureau

230 S. Main St. Saint Charles MO 63301  
800-366-2427 [www.historicstcharles.com](http://www.historicstcharles.com)

Your Guide to Shopping, Restaurants, Nightlife, Sports,  
Wineries & Other Local Attractions and Events

The Gateway Eagle  
Jeanette Turnbaugh, President  
(636) 278-2244 X 402  
Gwendolyn Hudson, Editor  
e-mail: [gwen210@sbcglobal.net](mailto:gwen210@sbcglobal.net)

**Contributions for articles always welcome!**

## St. Louis Gateway Chapter SGMP Board Members 2007-2009



**President:** Jeanette Turnbaugh, City of St. Peters, P.O. Box 9, #1 City Centre Blvd. St. Peters MO 63376,  
Phone: (636) 477-6600 x402, Fax: (636) 928-0901, Email: [jturnbaugh@stpetersmo.net](mailto:jturnbaugh@stpetersmo.net)

Immediate Past President: Linda Lefebvre, - 9557 Chester, St. Louis MO 63114, Phone: (314) 426-2051, Email:  
[linda.lefebvre@sbcglobal.net](mailto:linda.lefebvre@sbcglobal.net)

First Vice President: Gwen Hudson - National Geospatial-Intelligence Agency L-07, 3838 Vogel Road, Arnold MO 63010  
Phone: (618) 274-3433 . Email: [gwen210@sbcglobal.net](mailto:gwen210@sbcglobal.net)

Second Vice President: – Karen Fraser - Greater St. Charles CVB, 230 South Main Street, St. Charles MO 63301  
Phone: (636) 255-6102, Fax: (636) 949-3217, Email: [kfraser@historicstcharles.com](mailto:kfraser@historicstcharles.com)

Secretary: – Nancy Pittman – St. Charles Community College, 4601 Mid Rivers Mall Drive, St. Peters, MO 63376  
Phone: (636) 922-8314, Email: [npittman@stchas.edu](mailto:npittman@stchas.edu)

Treasurer: Tim North - St. Louis Audio Visual Inc., 8236 Brentwood Industrial Drive, Brentwood MO 63144  
Phone: (314) 783-0070, Fax: (314) 783-0075, Email: [tnorth@stlouisav.com](mailto:tnorth@stlouisav.com)

Director, Supplier –Vacant

Director, Planner – Marsha Seymour, City of O’Fallon, 100 North Main, O’Fallon, MO 63366  
Phone: (636) 379-5502, Email: [mseymour@ofallon.mo.us](mailto:mseymour@ofallon.mo.us)

Director, Planner – Gayle French - National Geospatial-Intelligence Agency L-90, 3838 Vogel Road, Arnold MO 63010  
Phone: (314) 263-4122, Fax: (314) Email: [FrenchGA@nga.mil](mailto:FrenchGA@nga.mil)